



Project teams collect vast amounts of data when conducting site investigations but may not know where and how to store that data. Successfully managing large amounts of data is important when it comes time to access it. And often, users find it difficult to understand and extract reportable information from what they've collected.

Project teams need quick access to their data to make informed decisions or to give clients easy-to-understand reports so they can make sound decisions.

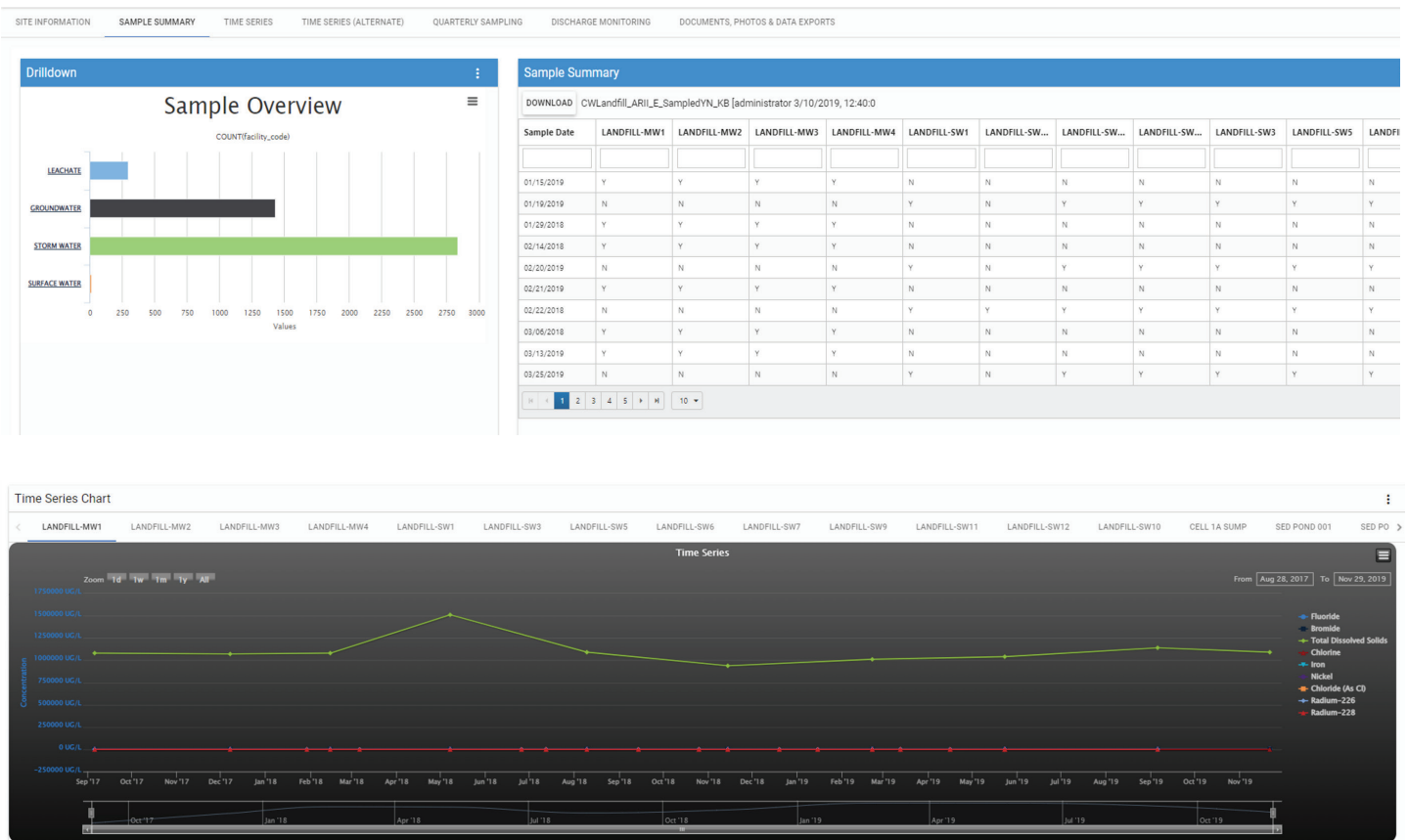
One solution to help project teams and individual users manage data is the Earthsoft's EQuls which stores large quantities of field data and provides numerous data visualizations and reporting options. It processes electronic data deliverables from the laboratory in a central repository that provides users with quick and easy data access. It also provides numerous querying capabilities.

The screenshot displays the 'Enterprise Dashboard - Superfund Site' interface. On the left, there are filter sections for 'Task Code' and 'Filter - Date Range'. Below these is a 'Soil Gas Data Grid' table with columns for 'action\_level\_code' and 'CAS\_RN'. The table lists multiple entries for 'NDEP\_NRESGG' with the value '127-18-4'. To the right of the filters are four map panels: 'PCE Soil Gas Traffic Light (Map)', 'PCE Indoor Air and Ambient Traffic Light (Map)', 'TCE Soil Gas Traffic Light (Map)', and 'TCE Indoor Air and Ambient Traffic Light (Map)'. Each map shows an aerial view of a site with green circular markers indicating data points. The interface also includes a navigation menu at the top with options like 'SITE INFORMATION', 'TIME SERIES', 'GROUNDWATER MAPS', 'SURFACE WATER', 'SOIL', 'VAPOR INTRUSION', and 'DOCUMENTS, PHOTOS & DATA EXPORTS'.

# EQuls Enterprise

These capabilities are important because it produces personalized “exports” depending on what a project team wants to show or what the client wants to look at. For example, EQuls provides maps that graph the data spatially, sample summaries that display the data in a simple table format, exceedance summaries that flag problem areas, and time-series charts use real-time or historical data to analyze trends.

In addition, EQuls lets a user upload and view the status and submitted and processed EDDs, making it easy to keep track of large quantities of data. A user can build and save queries or exports which allows users to personalize what they want to see and save all of this information in one place. EQuls also can automatic notifications and triggers that alarm a project team or client about a problem area at a site.



Microsoft Partner

Contact: Brett Milburn  
GISP

Director of Applied Technologies/VP  
215.491.6555 | bmilburn@langan.com

