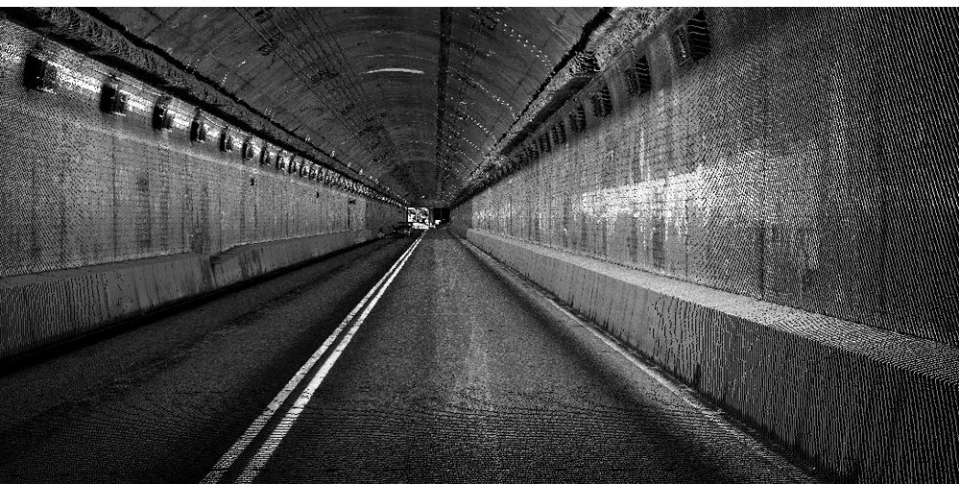
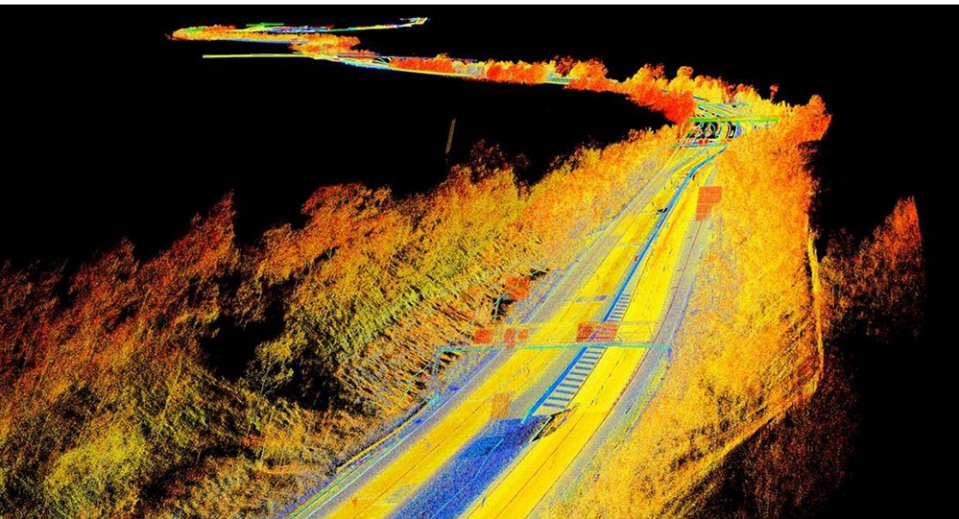


LANGAN: MOBILE MAPPING

Fully transportable. Cost effective. Precise.

As one of the emerging technologies in the surveying and 3D scanning profession, Langan now offers mobile mapping. Through use of the Leica Pegasus Mobile Mapping System and a team of expert professionals, our mobile mapping capabilities combine the usability and familiarity of videos and photographic images with the accuracy and precision of LiDAR point clouds to deliver a total solution.

The Pegasus mobile mapping system is fully transportable, cost effective, and precise. It can be used in a variety of scenarios, including roadway based capture, shoreline or bridge projects, railway and transit applications, or even off-road uses in the oil and gas or electrical industries.



Mobile Mapping Applications:

Campus Mapping
Utility Mapping
Roadway Surveys
Rail Mapping
AM/FM Support
Bridge & Tunnel Surveys
Vegetation/ROW Management
ADA Compliance
Signage and Lighting
Remote Sensing
Damage Assessment
Emergency Response Mapping
3D and BIM Modeling/Visualization
Feature Extraction to CADD or GIS
Virtual Surveying and Drafting
Site Surveys
GIS/LIS Data Acquisition
GIS Database Development

LANGAN

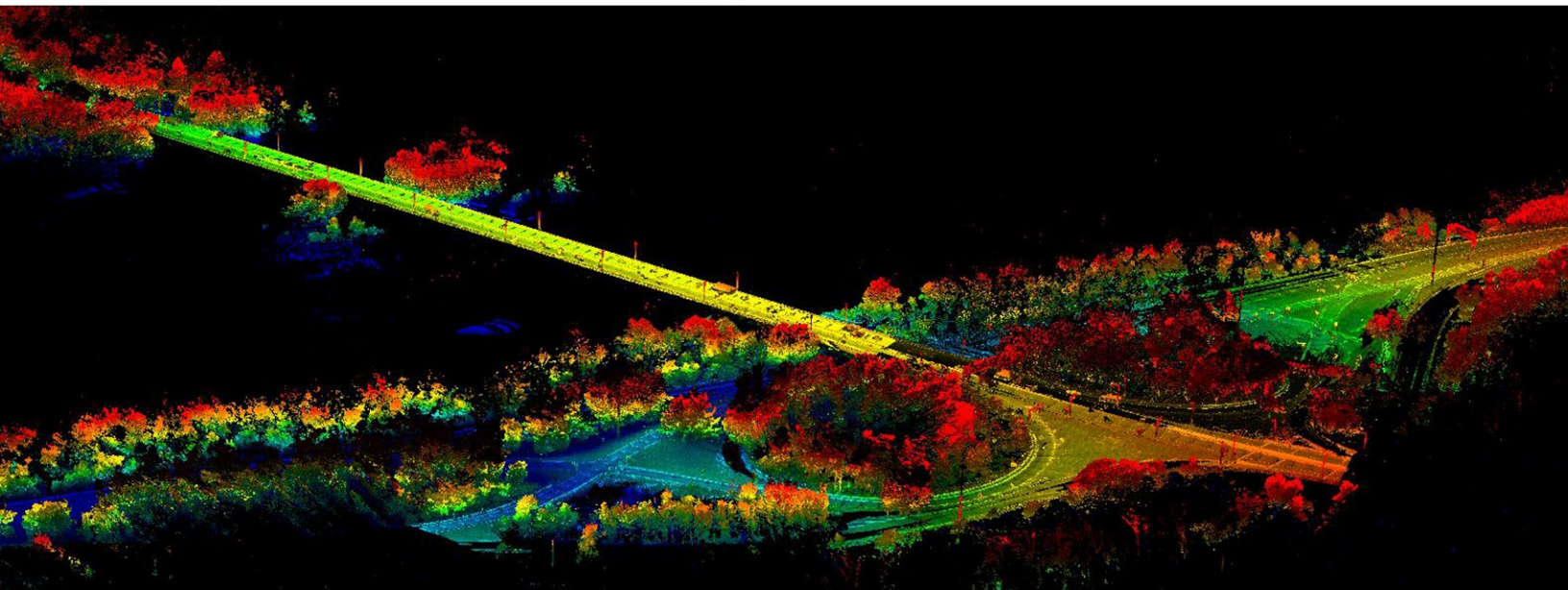
Comprehensive Services:

Site/Civil
Geotechnical
Environmental
Earthquake/Seismic
Surveying/Mapping/GIS
Traffic/Transportation
Landscape Architecture + Planning
Natural Resources/Permitting
Sustainable Design

Contact:

Joseph Romano, PLS
Principal, Surveying, Mapping, & Scanning
973.560.4618
jromano@langan.com

Stephen A. Ellis, GISP, CMS
Manager, Mobile Mapping & UAS Operations
973.560.4551
sellis@langan.com



NJ

NY

PA

CT

VA

OH

TX

FL

CA

International