

The image shows a large-scale environmental remediation project. In the foreground, a wide, shallow channel filled with brown sediment and water flows from the left towards the center. To the right of this channel, a long, curved containment liner, likely made of geomembrane, is installed in the water. The liner has a distinct corrugated or ribbed texture. In the background, a dense line of green trees separates the site from a residential area where a few houses are visible. The sky is a clear, pale blue. The overall scene depicts a controlled water management or containment effort in a natural setting.

ENVIRONMENTAL REMEDIATION

ENVIRONMENTAL REMEDIATION

Nationwide

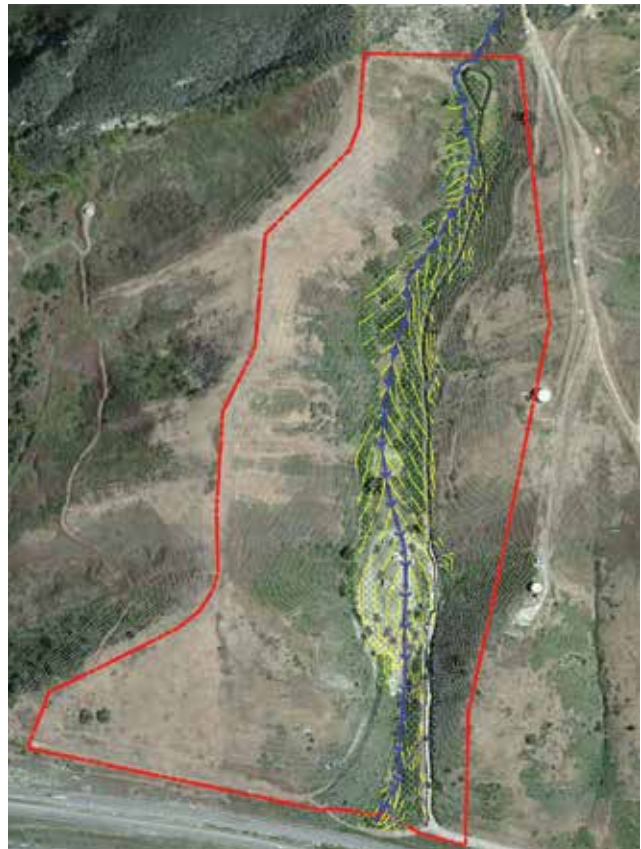
For decades, Langan has served as an environmental advocate for many of the largest corporations in the world. From the Fortune 500 to Silicon Valley, and from petrochemical companies to major utilities, our clients have come to trust Langan's diverse environmental services. Our environmental remediation practice has grown substantially in lock step with the firm's geographic expansion. In fact, Langan has developed an impressive group of experts who stay on the cutting edge of technological methods in an effort to protect our environment and our clients.



FORMER GAS PLANT

Santa Barbara, CA

On behalf of a major oil corporation, Langan played a key role in gaining regulatory agreement on a final remedy that returned a decommissioned gas plant site to its natural state. The agreed upon path to closure utilized a background analysis and risk assessment to identify attainable remedial cleanup standards for constituents of potential concern. Langan achieved a one to two year path to closure that was 27 years in the making with two previous consultants.



MANNINGTON MILLS

Salem, NJ

From 1997 to 2003, Langan implemented a comprehensive remedial investigation at this 250-acre manufacturing facility. This effort addressed and closed numerous former waste-treatment and disposal units and an industrial-waste landfill. Remediation and restoration of three former waste units were completed in 2010. Former lagoons and sediment placement areas were excavated and restored as natural stormwater basins and wetlands.

Team

Mannington Mills



KEYSTONE INDUSTRIAL PORT COMPLEX

Fairless Hills, PA

In 1993, the U.S. Environmental Protection Agency issued a RCRA Corrective Action Consent Order for the 2,500-acre Fairless Works facility. Langan provided strategic environmental consulting and site/civil engineering services to accomplish the goals of the client and several of their tenants, including dry bulk terminal operations and alternative-energy suppliers via the Pennsylvania Land Recycling Program and Pennsylvania – Region III US EPA One Cleanup Plan program.

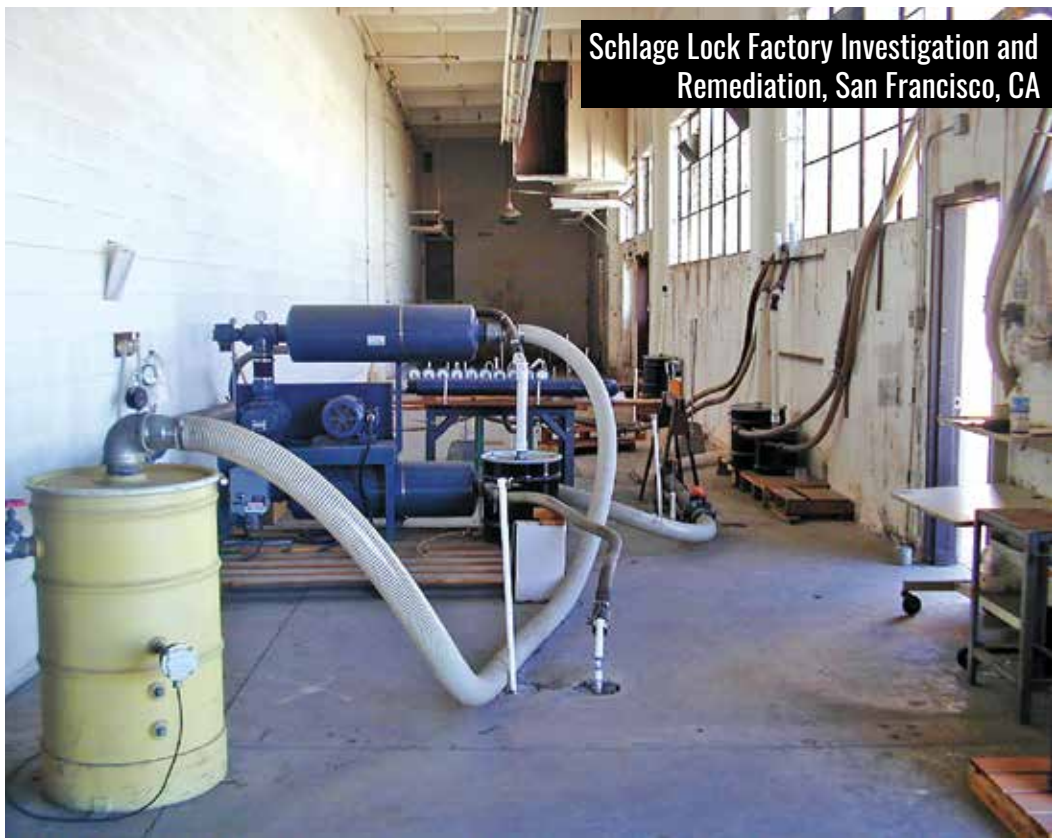


Team

Gamesa Wind US
AE Polysilicon
Dominion Energy
American Biofuels



ENVIRONMENTAL REMEDIATION



ENVIRONMENTAL REMEDIATION

