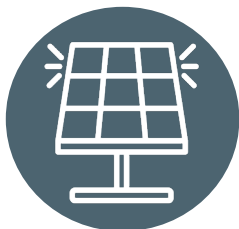


## Digital Solutions for Renewable Energy

### Designing and Delivering Advanced Tools to all Energy Sectors

Langan's Digital Solutions team leverages the latest software, data management, and analytical applications to support the full life cycle and management of renewable energy facilities and service providers. Our team provides easy to use solutions to address our clients' challenges through enriched workflows and data insights, while controlling costs, enhancing the quality of our deliverables, and increasing overall project efficiencies through:

- Planning and Site Selection
- Construction & Development
- Operational Management
- Policy & Compliance
- Utility Scale Customer Management



#### Solar

*Community &  
Utility Scale*



#### Wind

*On-Shore &  
Off-Shore*



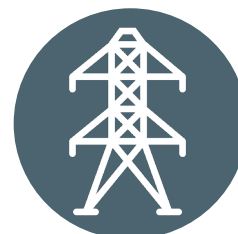
#### Geothermal



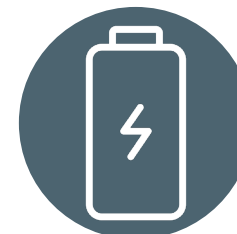
#### Green Hydrogen



#### Electric Vehicle (EV) Charging



#### Substations & Transmission Lines



#### Storage *Battery, Pumped Hydro, Compressed Air*



#### Community Choice Aggregation (CCA)

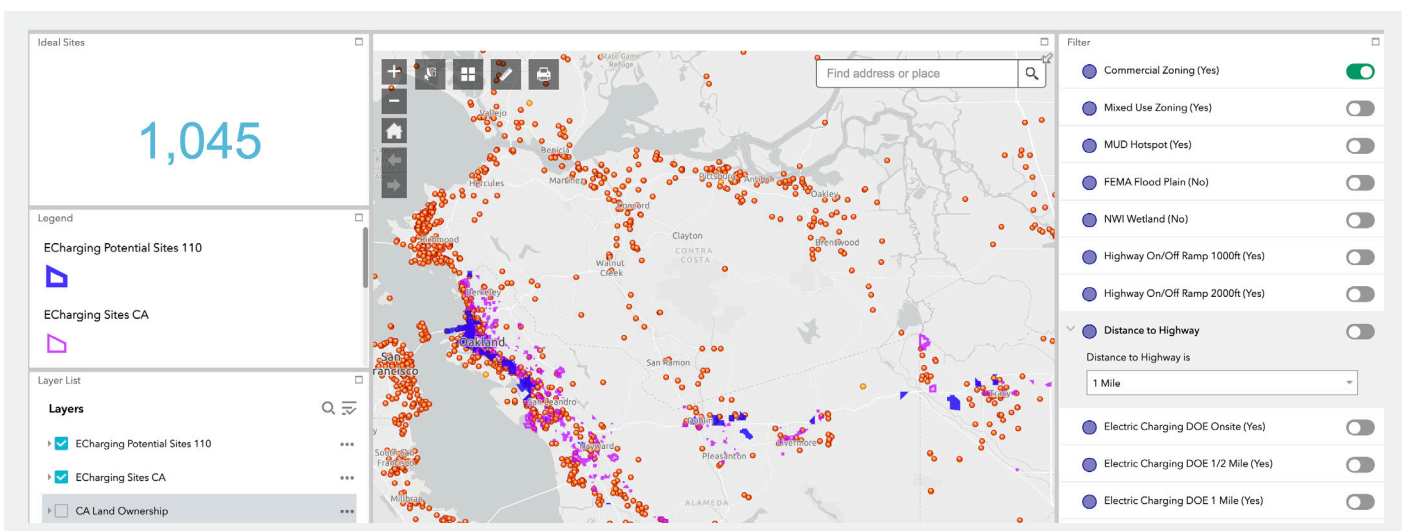
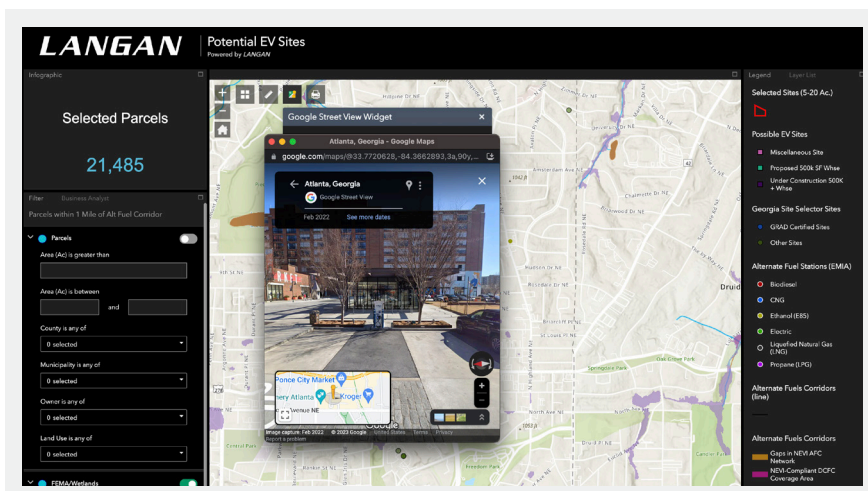
# Digital Solutions

## Geospatial Solutions:

- GIS Design, Integration & Implementation
- Asset and Facility Management
- Mobile Data Collection Solutions
- Data Interpretation, Management, Analysis, and Visualization
- Process/Workflow Development and Automation
- Automated Figure and Report Generation
- Spatial and Non-Spatial Data Integration
- Custom GIS Development Solutions
- AI / Machine Learning
- Data Dashboards and Web Viewers

## Infrastructure & Technology Services:

- Cybersecurity
- Software Development
- End-User Support
- Cloud Services and Backups
- Disaster Recovery/Business Continuity
- Data Management and Analytics
- Virtual Desktops



Microsoft Partner

Contact: Brett Milburn  
GISP

Director of Applied Technologies/VP  
215.491.6555 | bmilburn@langan.com

**LANGAN**