

## Digital Solutions / GIS for Energy: Renewables

### Designing and Delivering Advanced Tools to all Energy Sectors

Langan's Digital Solutions/GIS team leverages the latest software, data management, and analytical applications to support the full life cycle and management of renewable energy facilities and service providers. Our team provides easy to use solutions to address our clients' challenges through enriched workflows and data insights, while controlling costs, enhancing the quality of our deliverables, and increasing overall project efficiencies through:

- Site Selection & Location Intelligence
- Planning & 3D Conceptual Design
- Construction & Development
- Operational Management
- Policy & Compliance
- Utility Scale Customer Management



Solar



Wind



Geothermal



Storage



Green Hydrogen



Electric Vehicle (EV) Charging



Substations & Transmission Lines



Community Choice Aggregation (CCA)

### Core Capabilities

- **Site Selection & Location Intelligence**  
Tailored, location-specific tools designed for ease of use, helping you identify the ideal site while minimizing the burden on your land teams.
- **Operations & Maintenance (O&M)**  
Streamline data collection with IoT sensors and real-time feeds to monitor performance and support key maintenance tasks.
- **Policy & Compliance**  
Understand how new renewable energy policies impact strategic planning. Effectively plan and operate projects within a changing legislative landscape by focusing on geographic regulatory compliance, corporate integrity, and stakeholder access.
- **Construction & Development**  
Oversee and track your projects in real-time with interactive dashboards and 3D visualizations, enabling both project and public stakeholders to see the project's real-world footprint.
- **Utility Scale Customer and Program Management**  
Tailored tools to improve customer and program management, delivering high-quality and precise information while reducing risk.
- **Managed Services for Existing GIS/IT**  
Manage, maintain, and upgrade your current GIS and IT resources with flexible maintenance plans to meet your needs.

# Areas of Expertise

- **Site Selection, Location Intelligence, Capital Planning and Resource Allocation**
- **Building Space Planning and Management**
- **Asset Inventory, Asset, and Inspections**  
For Buildings, Utilities & Production Facilities
- **Environment, Health, and Safety Compliance**
- **Emergency Operations Response and Planning**  
With Risk Analysis, Emergency & Incident Response
- **Security Operations** with Security System Integrations
- **UAS / Drone Data Collection**  
Scanning & Drone Data Collection, Imagery Analysis & GeoAI
- **Mobile Apps & Field Operations Enablement**
- **Operations Status & Performance Dashboards**  
Type, Status, Conditions, Real-time Analytics & Reporting
- **Integrated 3D and Realty Capture**  
Siting, Concept Planning & Public Engagement
- **Indoor Mapping, Analysis, and Reporting**  
With ArcGIS Indoors Specialty
- **Routing and Wayfinding Apps**  
For Operations Management
- **Utility Mapping and Network Management**
- **ArcGIS Solutions for Utilities**
- **ArcGIS Solutions for Facilities**
- **ArcGIS Solutions for Public Safety**
- **ArcGIS Solutions for Architecture, Engineering and Construction (AEC)**

We work with our clients to deliver services and solutions that help:



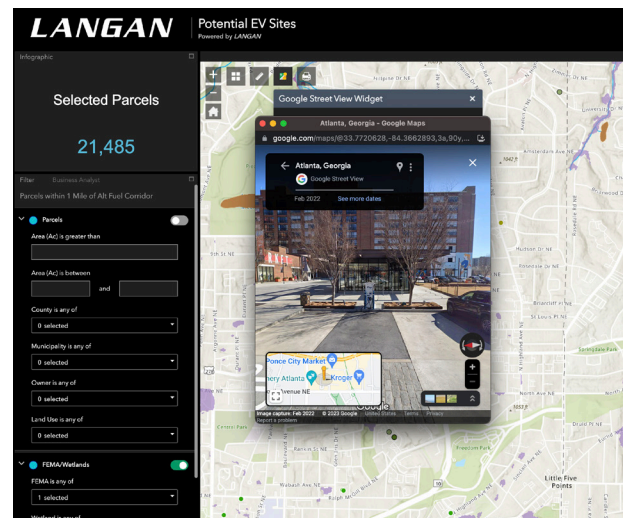
**REDUCE RISK**



**CONTROL COSTS**



**INCREASE PRODUCTIVITY**



Microsoft  
Partner



Contact: **Brett Milburn**  
GISP

Director of Digital Solutions  
610.984.8515 | [digitalsolutions@langan.com](mailto:digitalsolutions@langan.com)

**LANGAN**